

## Stands and stand adapters lineup

### Stands



PR-ST11XY stand Flexible stand Vertically adjustable stand

### Stand adapters



Stand adapter

Lens clamp

# DG-3

## The basic set

- Body (DG-3)
- Lithium-ion battery
- CF memory card (256MB)
- C mount adapter
- Video cable
- AC adapter and battery charger
- DC-DC cable
- Carrying case

※All lenses are considered as options to make sure you begin with the correct lens.

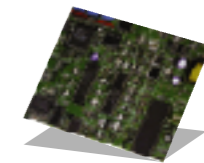
## DG-3 specifications

Image capture elements	1/1.75 inch interlace scanning CCD (Aspect ratio 3:2 RGB original color filter square pixel)
Pixels	Total pixels Approx. 2,300,000 pixels (1901 x 1212) Effective pixels Approx. 2,160,000 pixels (1816 x 1208)
Mount	Scalar DG mount (based on C mount when C mount adapter attached)
Shutter speed	1/45-4 seconds
Storage medium	CF Memory card ● NORM mode: 1792 x 1184 pixels Approx. 500KB ● FINE mode: 1792 x 1184 pixels Approx. 900KB ● ZOOM mode: 896 x 592 pixels Approx. 500KB
Monitor	Type-3.5 230,000 pixel amorphous TFT LCD(dot: 960 x 230)
Video output	NTSC
VIDEOOUT terminal	3.5φ monaural jack (LCD monitor side)
REMOTE terminal (also used for external synchronous strobe)	2.5φ stereo jack
DC IN terminal	EIAJ Standard Type-2 (DC jack center-plus)
Light off/on switch	Light A, light B interchangeable (when dual function lenses are used)
Input voltage	DC 6.0V±5% 1A 6.0V ~ 7.2V±5% when running on batteries
Power consumption	Approx. 6W when only the body is running
Dimensions	98 x 201.5 x 68 mm
Battery running time	1-1.5 hours depending on the user's setting 1 hour for successive recording (depending on the user's setting)
LED for power check	Power on... green LED light on Low battery... red LED light on Power OFF... both LED light off
Estimated number of recorded images on CF memory card (numbers subject to change depending on images)	● NORM mode: Approx. 638 images on a 256MB card ● FINE mode: Approx. 283 images on a 256MB card ● ZOOM mode: Approx. 638 images on a 256MB card
Weight	Approx. 370g (body only) Approx. 490g (when battery and CF card are attached)
Installation screw	Camera screw
Use environment	Temperature 0-40°C
Storage environment	Temperature -10-55°C
Operation and storage humidity	30-85% (condensation not permitted)
Output voltage	5V Maximum output current 250mA

2,300,000 pixels  
portable  
digital microscope

Cordless digital microscope

# DG-3



**scalar** Scalar Corporation  
IMPRESSIVE WORKS <http://www.scalar.co.jp>

Head Office 2-10-5 Itabashi, Itabashi-ku, Tokyo 173-0004 Japan  
tel. 81-3-5248-6001 fax. 81-3-5248-6110  
e-mail: sales@scalar.co.jp

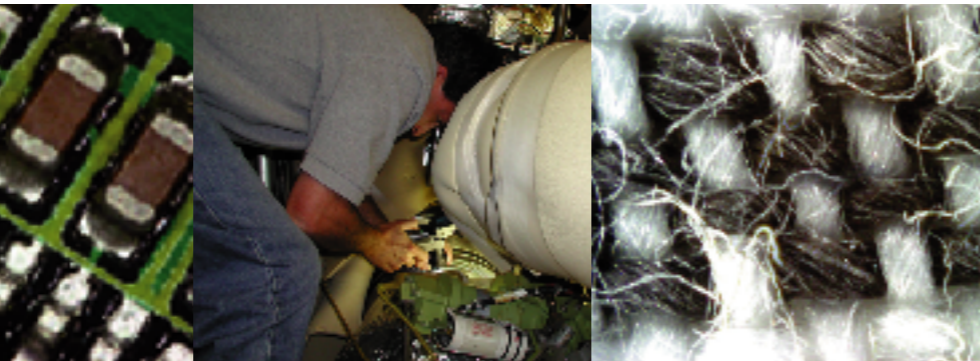
※The contents of this catalog are as of April 2006.  
※Product specification and design may change without notice due to product improvement.

200511-200604-2000-3

**scalar**  
IMPRESSIVE WORKS

The DG-3 is used at the Kennedy Space Center.

## Use Scalar's Technology for all your applications.



- The PREVIEW feature allows you to view the image before saving to the memory card. Since only good images are saved, memory space and time are conserved.
- A large array of lenses make the DG-3 a superb tool for capturing images on nearly any surface.
- The DG-3 has a C-mount adapter which will allow you to connect C-mount lenses, fiber scopes, microscopes, etc.
- Choose from 3 different stands to fit your application.



### Feature 1

Easily portable at only 500g. Lithium-Ion battery driven. No cords needed. Image anywhere. AC Adapter provided.



### Feature 2

Touch & View™ technology. No longer do you need to take the sample to the lab. Capture images on site. Minimize downtime. Maximize profits.



### Feature 3

Images are displayed on a larger, easily viewable 3.5 in. monitor. This 2,300,000 pixels high-speed LCD monitor is mounted on the main body. Capable of 30 frames per second.



### Feature 4

The size is clearly indicated by scale and magnification displays! Reliable image management. The scale and magnification are displayed on the monitor and may be recorded onto the image for future reference. May be used as an indication of the size of the object, or to clarify the magnitude used for image capturing.



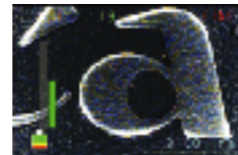
### Feature 5

Data is recorded on a CF card. Enhance any report with graphic images.



### Feature 6

The unit is equipped with a 2x button to zoom-in to check for proper focus and to view in more detail. It also comes with a focus bar to indicate the degree of focus. These features allow anyone to capture sharp images with ease.



### Feature 7

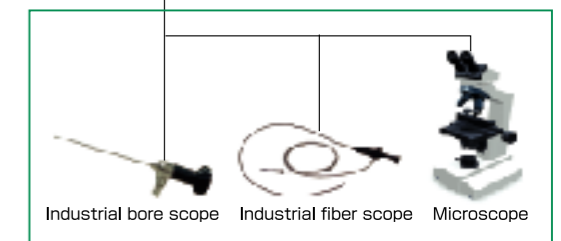
The LCD panel has video output to allow many people to observe the images on a monitor.



### DG-3 System



C-mount adapter will allow you to use third-party lenses.



\* Reflective/Non-Reflective Lenses Available.